

CREATE

Fast, reliable, and scalable virtual environments.

Lab
Lab Engine

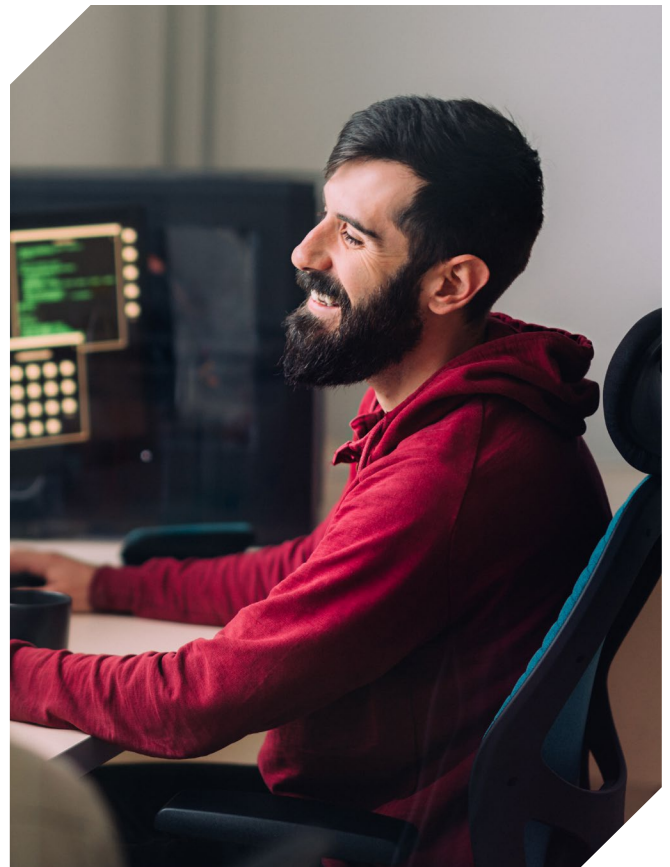
Manage and deploy infrastructure to power your demos, training, and events.

11:11 Lab Engine allows organizations to rapidly deploy and scale virtual environments that can be used for testing, QA, training, and marketing events — even sales experiences.

With Lab Engine, users can quickly create environments based on new or existing virtual machines. These environments can be saved as templates and deployed at scale.

Lab Engine gives you the flexibility to create elaborate environments that can include attributes such as nested hypervisors, complex networking and multiple virtual machines. Lab Engine also provides the ability to include instructor views and user guides, so you can quickly get users working in your provisioned environments.

Supported by the 11:11 Cloud Console, 11:11 Lab Engine is a cost-effective, scalable, and agile solution that allows organizations to focus on delivering content to their consumers without worrying about infrastructure.



**Lab**
Lab Engine

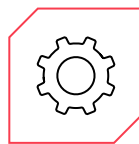
Leverage 11:11 Lab Engine to rapidly deploy hands-on virtual environments.

In today's fast-paced enterprise, IT departments are under pressure to deliver agile and scalable solutions for a variety of internal teams. This puts a huge burden on IT to allocate stable infrastructure resources to build, deploy and manage their teams' required systems.

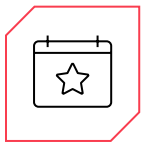
Use Cases for Lab Engine

**Customer Education**

The ability to train your users with complex environments and in-depth user guides keeps users fully informed. Lab Engine can provide re-usable template training environments, which allow instructors to focus on content creation, not hardware.

**Product Management**

Product teams thrive off of customer feedback and beta usability testing. The ability to rapidly spin up a controlled environment for feedback ensures that the product teams will obtain the information they are looking for to improve their products faster than ever before.

**Marketing Events**

Hands-on labs are becoming an increasingly popular way to showcase the benefits of your solution at events or trade shows. Give your team the ability to spin up an isolated, reliable environment to showcase your solutions.

**Pre-sales Tool**

In today's software environment, simply downloading a software package to test is often not enough. By equipping pre-sales teams with a reliable demo environment and an on-demand, fully configured and populated test drive, the odds of a prospect purchasing the product increases dramatically.

Additional benefits:

- VMware-based technology infrastructure
- Award-winning 11:11 Cloud Console for unified management
- Multi-layered, built-in security
- 24x7x365 support

Need help managing other areas of your IT environment?

11:11 Systems has experts, consulting services, and solutions ready to help strengthen your entire organization so you can truly effect digital transformation across your network. With the right solutions and professional services to assist your internal IT teams, we can help you modernize, protect, and manage your entire environment from our resilient cloud platform.