

SAFEGUARD

Protect your business
and support your team.



DRaaS
Disaster Recovery
as a Service

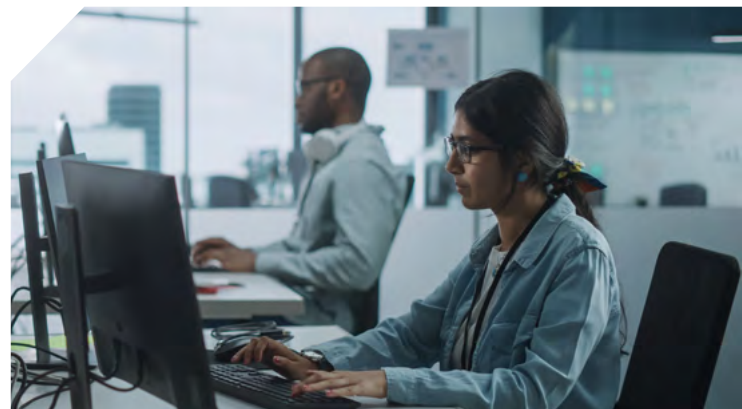
Fully manage your recovery, from planning to failover.

With the myriad of threats facing businesses today — including cybercrime, IT failure, human error, and natural disasters — IT teams are under demand to manage existing business operations while also enabling the business for future innovation. It's no wonder that more and more teams are turning to fully managed disaster recovery (DR) services to provide expertise and relief for teams as well as increased security and protection for the business.

11:11 Autopilot Managed Recovery for DRaaS was developed for the IT organization that focuses on driving efficiency and performance, but can't risk the revenue and reputational impact associated with data loss and downtime. Autopilot provides complete end-to-end design, implementation and management of the disaster recovery environment, including all cloud components and test or live disaster recovery failovers. The service delivers immediate efficiencies of scale and cost reduction benefits, while ensuring mission-critical applications and workloads are quickly recovered in the event of data loss or significant downtime.

Built on 11:11's proven disaster recovery platform.

11:11 Autopilot Managed Recovery is built on 11:11's industry-leading disaster recovery global platform, which was designed for VMware-based application and workload protection in the cloud. 11:11 is a four-time Gartner Magic Quadrant Leader for DRaaS with a focus on security and compliance and a 100 percent availability SLA. The 11:11 experience ensures customers can reduce time spent managing and maintaining IT and focus on what's most important to their business.











Complete end-to-end design, implementation, and management of your DR environment.



Advanced Features

With Autopilot, you have enhanced management and support over key service elements including:

 Scheduled testing	 Live failovers	 Resource provisioning	 Change management
 Advanced documentation	 Service metrics	 Service levels	 Service health

Premium support services

Additional premium assistance and support includes:

- **Managed recovery:** Failover and failback of all virtual machines.
- **Managed service components:** Management of all service components. Updates to replication software, firewall configuration, and failover process, etc.
- **Managed service provisioning:** Deploy new workloads, add capacity and circuits, and more.

Simplified onboarding

11:11 takes a hands-on project management approach to the planning, design, and implementation::

- **Solution design:** Inventory of workloads and assisted guidance on L2 or L3 connectivity into the 11:11 Cloud.
- **Deployment:** Replication software installation, setup and configuration of VPN, configuration, and testing.
- **Recovery runbook development:** Application dependency, mapping and tiering, and ensuring the correct start-up order with documentation and automation.

Need to ensure other areas of your business are cyber resilient?

11:11 Systems has experts, consulting services, and solutions ready to help strengthen your entire organization, so you can truly effect digital transformation and cyber resilience across your network. With the right solutions and professional services to empower your IT teams, we can help you modernize, protect, and manage your entire environment from our resilient cloud platform.